

THE STATE OF TEXAS
CITY OF RIO HONDO
COUNTY OF CAMERON

Juan Garza, Commissioner Place 1
Margaret Perez, Mayor Pro-Tem
Jose S. Cavazos, Commissioner Place 5

Esteban Bocanegra, Place 2
Olga Gallegos, Commissioner, Place 4

Gustavo Olivares
Mayor

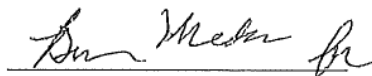
Planning and Zoning Commission of the City of Rio Hondo
March 25, 2025

Pursuant to Chapter 551, Title 5 of the Texas Government Code, the Texas Open Meetings Act, notice is hereby given that the governing body of the City of Rio Hondo, Texas, will convene for a **Regular Meeting at 6:00 p.m. on Tuesday March 25, 2025**, at the City Commission Chambers on the Second Floor of the Rio Hondo Municipal Building located at 121 N. Arroyo Blvd., Rio Hondo, Texas 78583.

Call meeting to Order (Planning and Zoning Chairman (Mayor)

1. First Public Hearing on Zoning Case 2025-01 to rezone from Single Family Residential to Business District Lot 1 Block 1 SL Graham Subdivision known as 900 N. Arroyo, Rio Hondo, Texas.
2. Public Hearing and Action on the Preliminary Plat for Parkway Estates Subdivision.
3. Consideration and Action adopting the City of Rio Hondo annexation study areas.
4. Adjournment

Note: The Meeting is accessible to Americans with Disabilities. Persons with disabilities who plan to attend this meeting and who may need assistance, please call the City Secretary at (956) 748-2102, with at least twenty-four hours prior to the meeting.



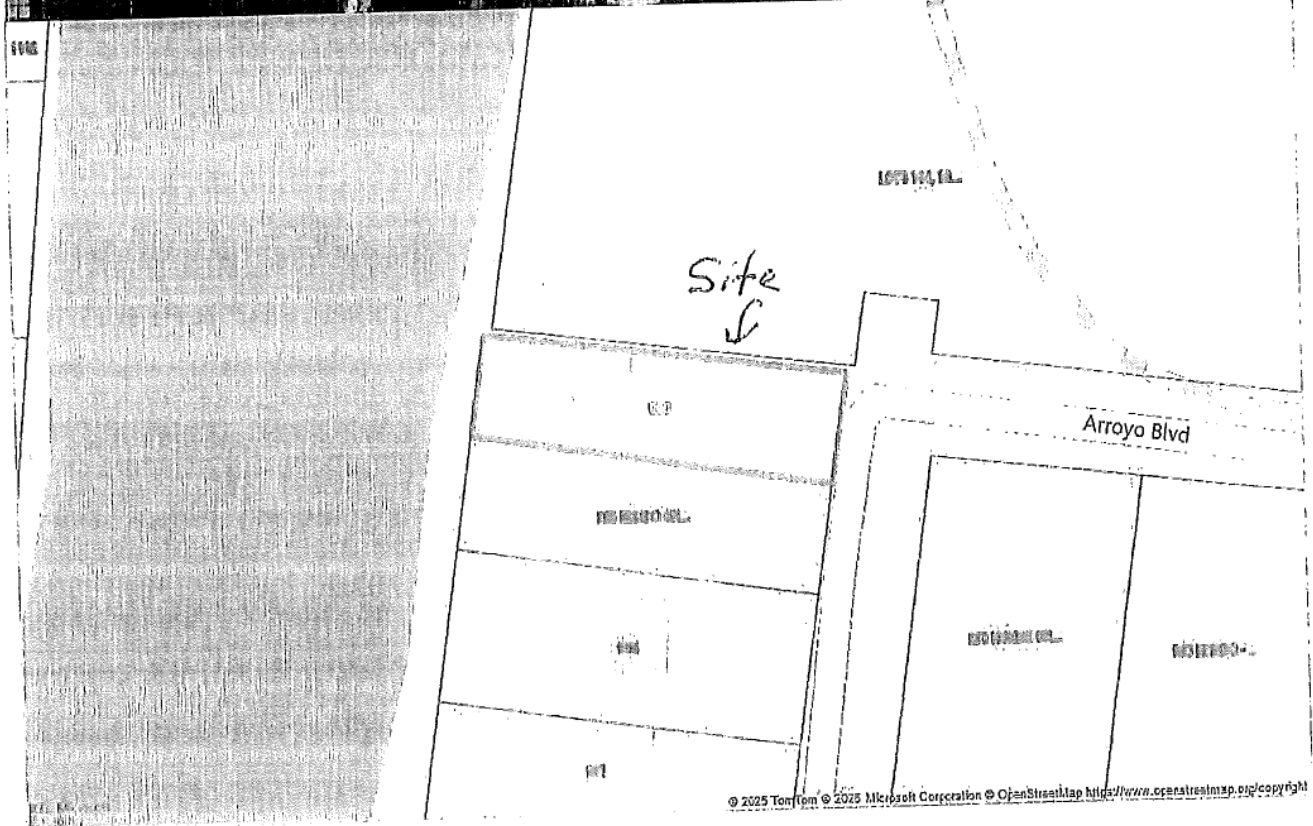
Gustavo Olivares

Chair of the Planning and Zoning Commission of the City of Rio Hondo

Posted: Friday, March 21, 2025 at: 4:50

Attest: Ben Medina, Jr. City Administrator

Property Map



18/36

Form Services
Online Airport

North

North Robertson Road

North Robertson Road

Donna Curdie

Bluebonnet Drive

Bates Road

Reynolds Avenue

South Reynolds Street CR 1846

Reynolds Colorado

641

លោក ហ៊ុន សែន

Proff Jurgens

Wetmore Road

Penelope
10/10/2004

[illegible]

FM 106 Colorado Avenue

Rio Hondo
High School

North Sam Houston Boulevard

57E XL

2025

A vertical scale bar with two horizontal tick marks. The top tick mark is labeled "200 m" and the bottom tick mark is labeled "500 ft".

中
心
的
地
方
政
府
與
民
生
的
關
係